



Plymouth Council Control Room

Overview

Project Title:
CCTV Control Room Furniture

Client:
Plymouth City Council

Sector:
Security

Completion:
July 2015

Project Overview:

As part of the relocation and upgrade of the CCTV control room, Thinking Space provided a 3 operator console complete with radio pods as well as two Evolution Media Walls, one for the main control room and one for the Road Traffic Office.

Case Study

CCTV Control Room Furniture



Overview of client

Today, Plymouth City Council holds over 320 CCTV cameras around the city, helping to prevent crime, anti-social behaviour and to keep everyone safe. These are monitored in a central control room, managed by Plymouth City Council 24/7, 365 days a year. In 2015, the previous control room in the old Mayflower car park was to be demolished to make way for the city's new coach station. Plymouth City Council transformed a large unused kitchen beneath the Council House, into a brand new central control room. This also provided an opportunity to modernise and upgrade the control room technology with the installation of fibre optic cabling for camera networks.

Scope of the project

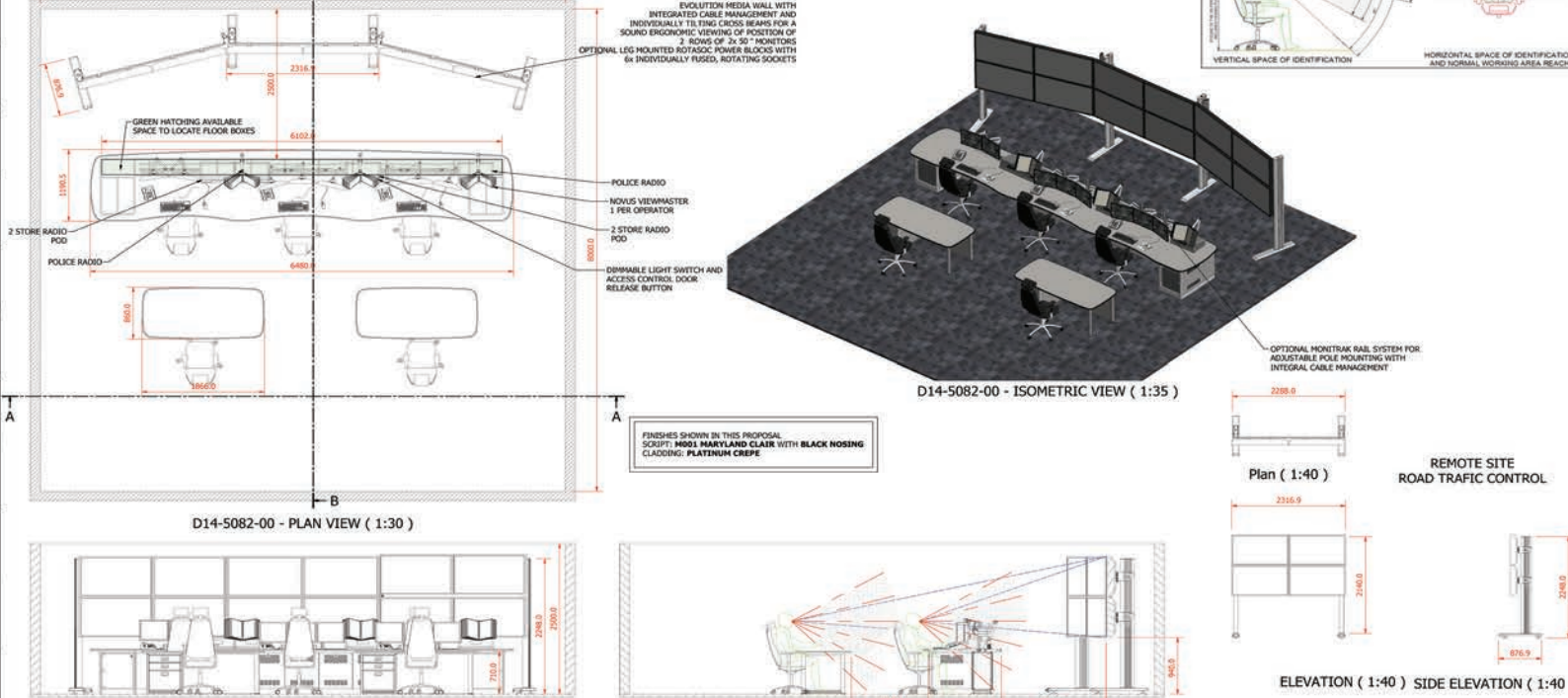
The key requirement in the success of the control room, was for all operators to be able to monitor CCTV footage around the city. Therefore, a large media wall was to be the focus, to mount 12 x 47" screens supplying footage from the 300+ cameras located around the city. The technical furniture was specifically designed to support the central focus, with the console being curved to allow 3 operators to view the media wall ergonomically.



3D render proposal drawing of the CCTV control room



improving working environments



Above: 2D proposal drawing provided by Thinking Space as part of their free design service

Project execution

The main console was built large enough to accommodate up to 3 operators, spanning over 6 metres in length. The material finishes chosen was M001 Maryland Clair with black nosing, and Platinum Crepe panelling. The worktop is curved to create an ergonomic environment for each operator and to avoid sharp edges in a busy workspace. All rear lower panels are removable to provide access to the void that runs at the rear of the console. This void contains the cable management that runs throughout.

At each end of the console under the desktop, is a storage unit complete with lockable glass door each capable of holding 2 tower PC units.

The centre and right hand positions are equip with adjustable monitor mounts for 3 screens with the left hand end equipt to support 2 screens. All monitors are mounted on poles at the rear of the worktop allowing space for PC and telemetry keyboards below. A Moni-track is built into worktop to allow the support columns to be repositioned and for cabling to drop into the cable management below.

In addition, on the desktop, custom designed equipment pods were provided, to hold the 4 store radios and 2 police radios. Novus Viewmaster Ergo II mounts were also provided to display important information. At each end of the console under the desktop will be a storage unit

complete with lockable glass door each capable of holding 2 tower PC units.

Two Evolution Media Walls are provided for this project as a simple and cost-effective solution for mounting monitors. The aluminium framework provides a modern and spacious structure that is strong enough to hold all sized LCD screens. The smooth curved aluminium legs provide space for cabling runs and power distribution units that can also be provided (costed as optional). Monitor mounts are included within the media wall price along with VESA fixings.

For the main control room application, 12 x 47" flat screens are mounted in 2 rows of 6 in a winged arrangement with all cabling hidden behind the screens and down through the legs.

The control room was delivered on time and to budget, with the CCTV control room needing to be in operation throughout the complete relocation. In the first six months of the new control room being operational, over 2,000 incidents were recorded. This ranged from missing people to persons of interest and anti-social behaviour. The operators also received dementia-friendly training and work closely with the police to spot individuals with mental health issues who may become confused and disorientated whilst in the city.



The scalloped console designed by Thinking Space allows all three operators to view CCTV footage on the central media wall at the front of the control room